



<https://en.sobokuya.life/>

*Carve and Tick*

*~To depict every single moment in time~*



The shape, characteristics, and species of trees differ, but every tree is alive.

As the woodcutter takes the life of a tree, they do this with great respect for the tree. The woodcutter talks to the tree, sees its character, and makes it into lumber. The carpenter carves the wood. They carve new life into the material for houses and fittings. As generations pass, and the house decays, the wood withers and the tree return to the earth.

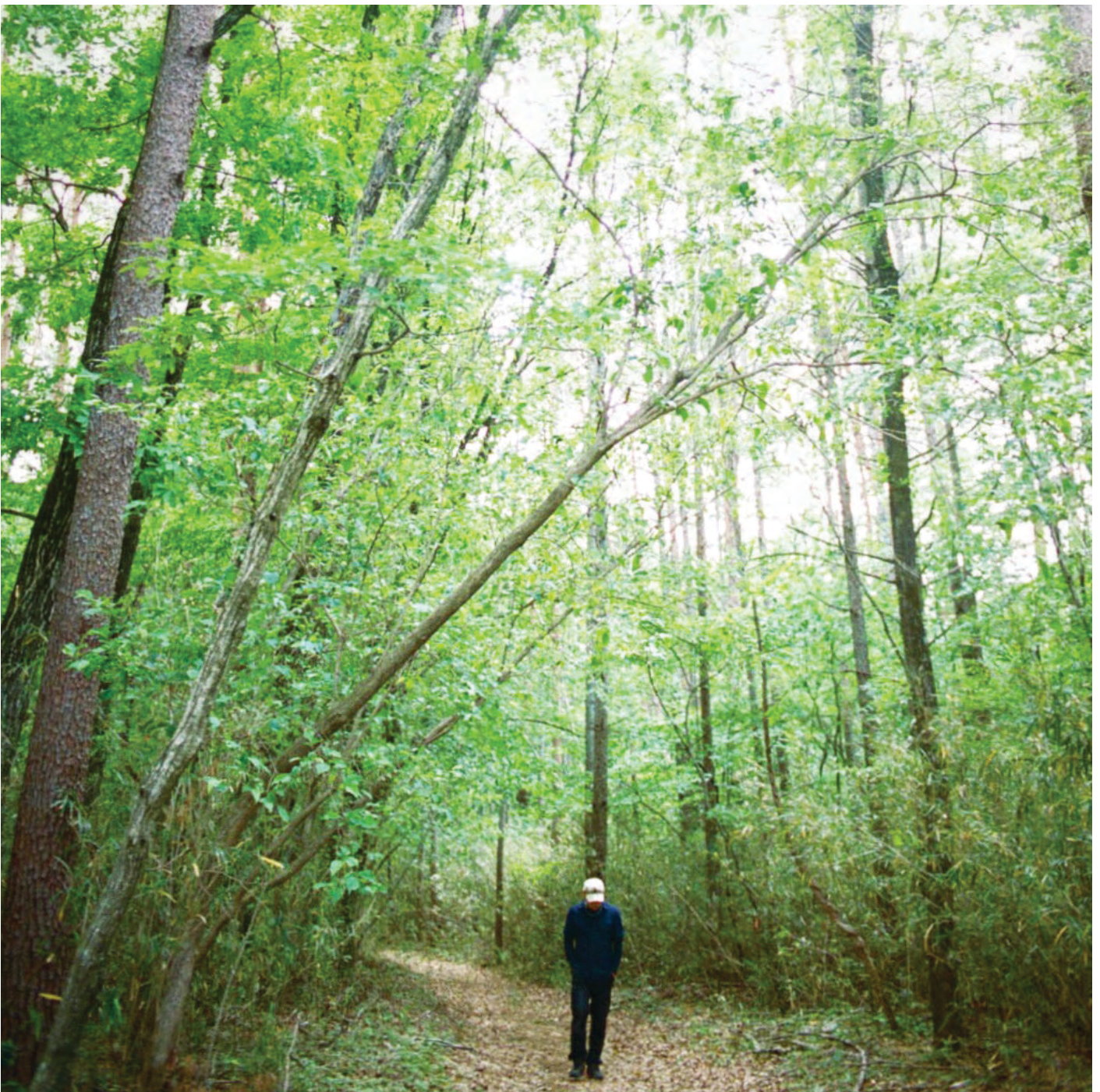
The house is built. The tree gives it life to become a magnificent house. The house grows with the people who live in it, and marks time for a long, long time. A moment in time. Capturing every moment, that is the work of Sobokuya.



I dislike the unnatural.

I respect the life of trees. Most builders would avoid crooked trees, not Sobokuya. We carve and join the wood as if it was born to be a part of the house. The lives of the trees must be sublimated by those who have felled it. We make the best use of the original shape of the trees. I feel that there are more and more people these days that have forgotten the essence of what it means to be one with nature. We need to remember true kindness. "There is no spirit in the details. Spirit is in nature", which means that the most beautiful things are things that are natural.

Representative Director Imai Hisashi





# PROJECTS



Sobokuya's Processing Studio  
From here the houses constructed by the traditional Japanese “Jikugumi” method are born.





## Residential Buildings

Traditional Japanese architecture using the “Jikugumi” method have a structure based on rationality, simple yet sturdy with an elegant space. The work of our skilled carpenters is an art that incorporates the “Sumitsuke” method: there is very little metalwork, the structure is made up of beautifully carved and joined wood. Through joining the wood fittings, “Tsugite” and “Kumite”, the house will have a strong and elegant structure. With a house from Sobokuya you will start your new life surrounded by the smell of pure and natural wood.



## Medium to Large Wooden Structures

It is quite a challenge to build a large, column-free space purely using wood. However, when carefully considering the shape and size of the building and utilizing traditional Japanese techniques such as “Taiko beam”, “W-beam” or “Sagezuka”, it becomes possible to create a large and open space. In addition, a “Koshiyane” roof lantern will allow plenty of natural light to enter that large indoor space.





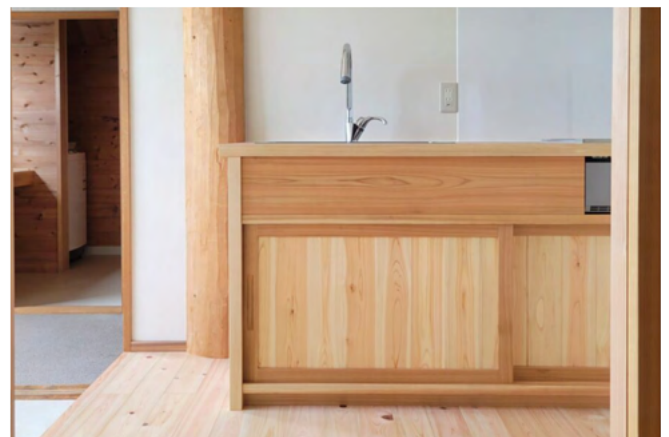
## Commercial Projects

We also work on commercial facilities such as restaurants, shops, and offices. Not only do we construct buildings, but we also design and plan interiors. We also do small projects of singular rooms. You may also contact us for requests of doors, furniture, or utensils for display. While our pride is in utilizing wood, we are quite good at carrying out projects which incorporate a combination of steel and wooden materials as well.



## Renovation

Considering renovating your house, a room, the kitchen, or perhaps a bathroom? We can assist with any and all renovation projects; ranging from simply replacing your kitchen countertop with an elegantly crafted wooden “Kaede” countertop to renovating the entire house – we have you covered.







### Restoration of traditional houses

A wooden house that has seen the life of Japan and the Japanese people for decades or even centuries, no matter how fine the materials used, is bound to wear out over time. As old pillars and beams are impregnated with the life of the people who have lived there through centuries, it is not proper to merely replace them with new ones. Sobokuya takes pride in restoring these houses to their original state.



### And many other projects

Park pavilions, toilets, tree houses, storage sheds, clay pizza ovens, landscaping projects... these are just some of the things we do at Sobokuya. We find it rewarding to work on buildings that are not restricted to one specification, be they houses or shops.



# CHARACTERISTICS







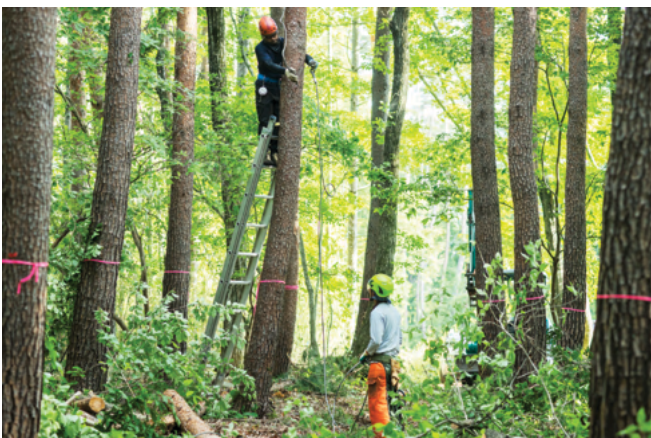
## “Kíru”

To build that house, we will use this tree.

The charm of Sobokuya is that we act both as carpenter and a woodcutter. We select and fell trees while imagining the house that will be built with the selected trees: “we will use this pine for the main post, this cypress will make a beautiful floor, the maple will make an elegant kitchen top, and the zelkova a stately table”. We imagine the future of all the trees before we select and fell them for construction. It is our way to integrate the beauty of nature into our projects.



As we are taking the life of a tree, we must not forget to express our gratitude to nature. We offer salt and Japanese sake and say a traditional prayer before felling the tree.



When there is no room to fell a tall tree, a woodcutter becomes a “Sorashi”. He climbs the tree and hangs in the sky, felling the tree piece by piece, starting with the branches and moving to the trunk.



What is the centre of gravity of the tree? What are the surroundings? If you are not precise, the tree will not fall where you want it to.





“Hiku”

We cut down the trees and saw them ourselves.

Most carpenter would order pre-cut lumber from a lumber company, but not Sobokuya. We bring in the logs ourselves and saw them ourselves. This saves money on materials and reduces our overall expenditure, allowing us to offer better prices and value to our clients. As we select the trees specifically for our projects, our buildings have an elegant and unique charm that one would not get when ordering pre-cut lumber from a lumber company.



Since we have taken the life of the tree, we want to use it to the fullest. We ascertain the characteristics of the tree in order to make the best use of it, for the most suitable place in the house.



At Sobokuya we bring in the wood ourselves. Detailed instructions are given to the sawmillers on the necessary dimensions and specifications of the lumber that will be used for construction.



Sobokuya's projects are light on our client's pockets. As more than half of the materials used are wood which we gather by ourselves, we are able to offer better rates by cutting out the middleman.





The architect communicates with the carpenter to determine the structure of the house. The carpenter's work begins when he and the architect comes to a mutual agreement.



“Sumitsuke” is a vital work of carpenters. This work is by no means easy, as the measurements have to be precise. If they are incorrect, and the posts are too short, the pillars will not be able to support the roof. Therefore, the process of “Sumitsuke” plays an important role in the construction process.



The carpenters carve the timber following the directions of the chief carpenter. As a powerful weapon in the art of “Sumitsuke”, we have a number of original rulers crafted and patented by Sobokuya’s master builder.



“Kizamu”

**Handcraft preserves Japanese traditions.**

The latest trend in construction is computer-controlled chopping, known as pre-cutting. The carpenter simply assembles the pre-cut timber as it arrives. We at Sobokuya want to keep the old construction traditions alive, the traditional Japanese way of building. We wish to preserve the sturdy and beautiful Japanese wood construction methods. “Sumitsuke” is the process of using ink to mark the parts to be carved. It may be hard for the uninitiated to even imagine what the building will look like when it's done. However, without preserving this ancient Japanese method, it would be impossible to restore shrines and temples, or revive traditional Japanese houses.





We do not build houses. We build happiness.

The final stage is the construction of the house. When it comes to woodcarving called "Kizami", only a few carpenters work on it, but when it comes to the assembling process, known as "Tatekata", our carpenters work lively together. Constructing the frame is a hectic process, the shape of the house quickly takes form during this. The final step of the "Tatekata" is to raise the ridgepole. In Japanese, this step is called "Joutou". We drink to the "Jichinsai", which is a ground-breaking ceremony, then we drink at the "Joutou". The interior and exterior finishes are a simple yet time consuming job. It takes a lot of patience to build the fittings out of wood without using sashes. But it's also where a carpenter's real talent comes into play. This is because the houses we build are filled with the happiness of the people who live in them. We are building happiness.



A large number of carpenters participate in the "Tatekata". Some are hammering girders into posts, others into joints, others into pairs. It's dangerous work, so one must not be careless.

"Tateru"



"Tatekata" begins, and a tool known as "Itazu" is necessary. The order of assembly is marked by Japanese letters such as いき or ほ参. The structure is assembled following the order written on the "Itazu".



The highest part of the roof is called the ridge. When this ridge is raised, the "Tatekata" process is complete. The ceremony celebrating that is "Joutoushiki". At the end of the ceremony, we sing Sobokuya's original chant: Yo-yo-yo-♪



## Bringing Japanese architecture to the world.

Sobokuya has the ambition to bring traditional Japanese architecture to the world. Through utilizing methods normally carried out by “Miyadaiku”, carpenters specialising in building traditional wooden temples, combined with fresh and original design ideas that incorporate a Japanese heritage we wish to bring to the worldwide scene, we aim to create unique and elegant wooden buildings that incorporate natural charm, tradition, and a connection with nature.



Sobokuya's office with “Ishibadate” stone base





Wood joint



A natural “Taiko beam” in the middle of the house









素朴屋



素朴屋株式会社

Sobokuya Inc.

Establishment : 2006

Address : 〒409-1501, 1878 Nishiide, Oizumi-cho, Hokuto City, Yamanashi Prefecture, Japan

TEL : (+81) 551-45-7177

Website : <https://sobokuya.life>

Services : • Construction, extension, and structural alteration of residential and commercial buildings.  
• Restoration of traditional buildings.  
• Forestry, logging, and tree felling.

